

STAVES



Treble clef and bass clef line notes

Musical notation showing line notes for treble and bass clefs. The treble clef staff contains notes E, G, B, D, and F. The bass clef staff contains notes G, B, D, F, and A.

Staff	Clef	Note
1	Treble	E
1	Treble	G
1	Treble	B
1	Treble	D
1	Treble	F
2	Bass	G
2	Bass	B
2	Bass	D
2	Bass	F
2	Bass	A

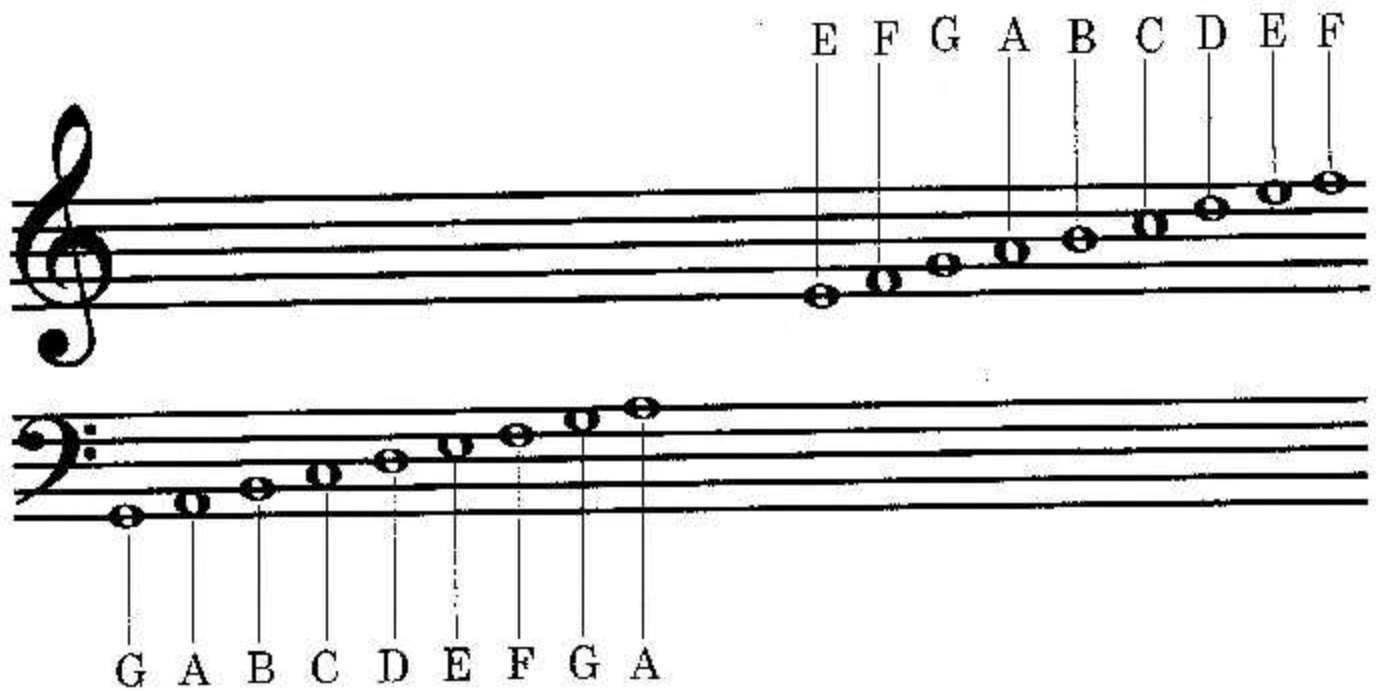
Treble clef and bass clef space notes

Musical notation showing space notes for treble and bass clefs. The treble clef staff contains notes F, A, C, and E. The bass clef staff contains notes A, C, E, and G.

Staff	Clef	Note
1	Treble	F
1	Treble	A
1	Treble	C
1	Treble	E
2	Bass	A
2	Bass	C
2	Bass	E
2	Bass	G

STAVES

Treble clef and bass clef line and space notes



Treble clef lines

5 lines

Treble clef line note

E G B D F

Treble clef space

4 spaces

Treble clef space note

F A C E

Bass clef lines

5 lines

Bass clef line note

G B D F A

Bass clef space

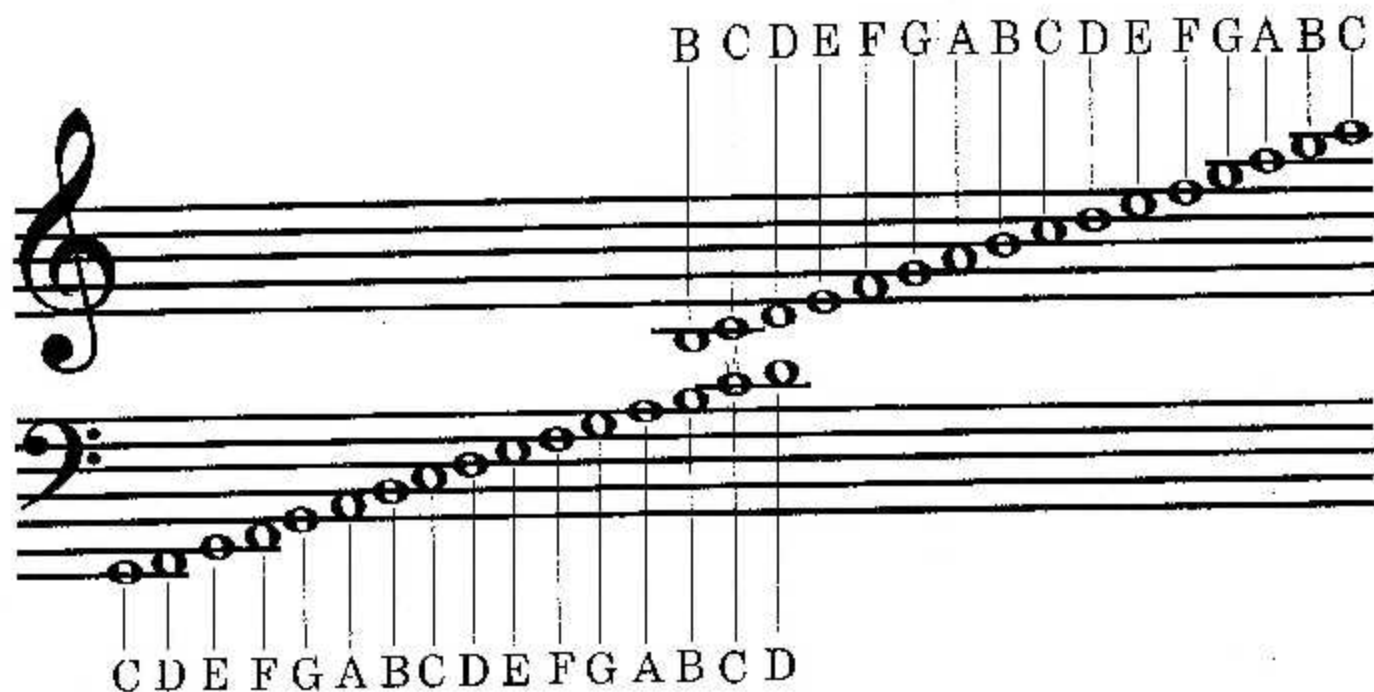
4 spaces

Bass clef space note

A C E G

LEGER LINE

All the note on the staff from bass clef low C to treble clef high C



Treble clef line note of top leger line A C E

Treble clef line note of bottom leger line F A C

Treble clef space note of top leger line G B D

Treble clef space note of bottom leger line G B D

Bass clef line note of top leger line C E G

Bass clef line note of bottom leger line A C E

Bass clef space note of top leger line B D F

Bass clef space note of bottom leger line B D F

SYMBOLS



TREBLE CLEF



BASS CLEF



STAVE



SHARP



FLAT



NATURAL



NOTATION



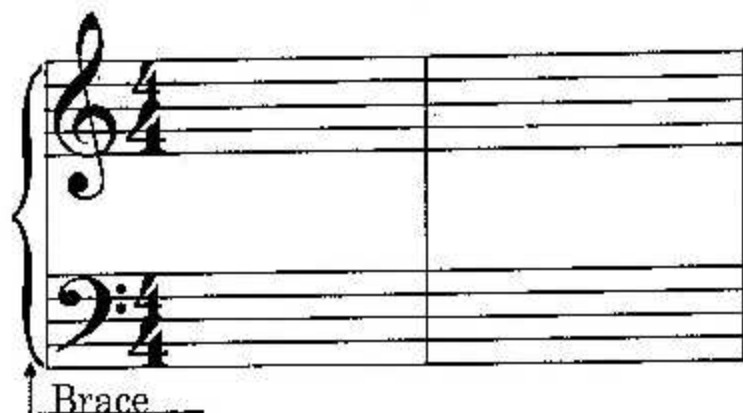
REST

Basic note: 7 - A B C D E F G

Sharp note: 5 - A[#] C[#] D[#] F[#] G[#]

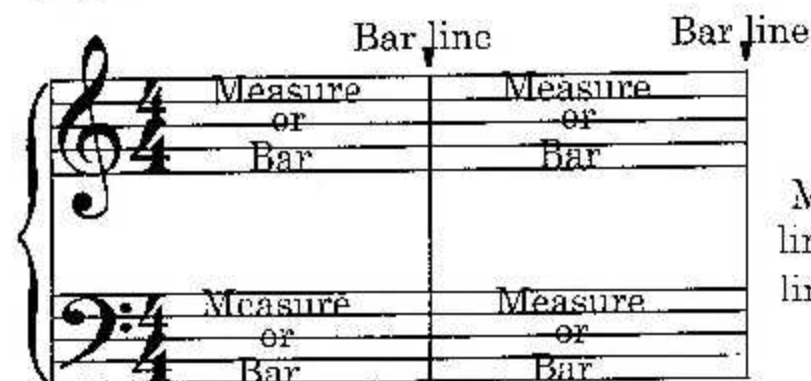
Flat note: 5 - A^b B^b D^b E^b G^b

MEASURE AND BAR LINE



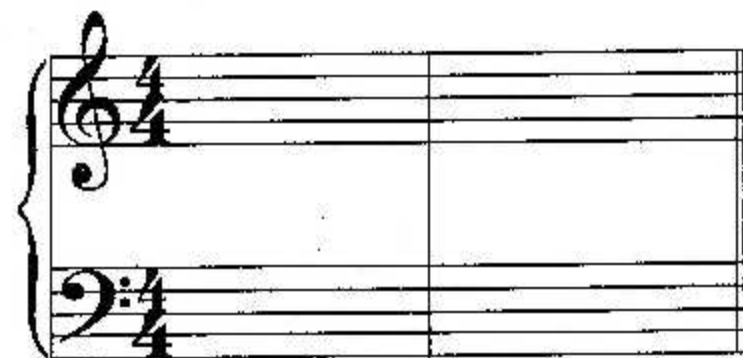
Brace

When the bass and treble staves are connected by a brace and a line they combine to form the grand staff



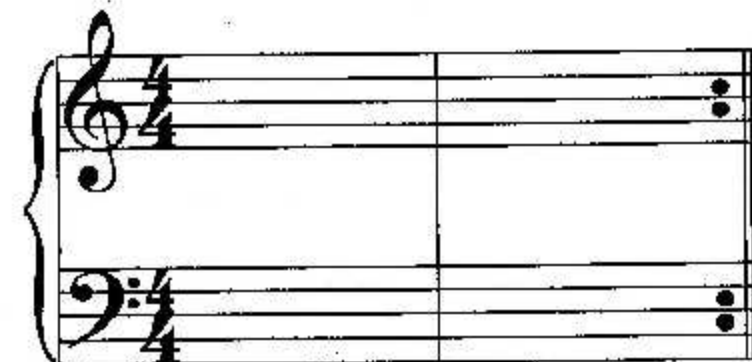
Measure and bar line

Music is divided into equal part by lines. The area between the two bar lines is called a measure or bar










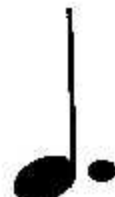
Double bar line

A double bar is written at the end of a piece of music



Repeat

Two dots placed before the double bar indicate the repeat sign. It means to go back to the beginning to play

<u>Symbol</u>	NOTATION <u>Name</u>	<u>Value</u>
	Semi breve	4 counts
	Minim	2 counts
	Crotchet	1 count
	Quaver	$\frac{1}{2}$ count
	Semi quaver	$\frac{1}{4}$ count
	Demi semi quaver	$\frac{1}{8}$ count
	Dotted minim	3 counts
	Dotted crotchet	$1\frac{1}{2}$ count

REST



Semi breve

4 counts



Minim

2 counts



Crotchet

1 count



Quaver

$\frac{1}{2}$ count



Semi quaver

$\frac{1}{4}$ count



Demi semi quaver

$\frac{1}{8}$ count



Dotted minim

3 counts



Dotted crotchet

$1\frac{1}{2}$ count

BASIC NOTE

A B C D E F G Is the basic note of western music

This called note

A C D F G Is full note

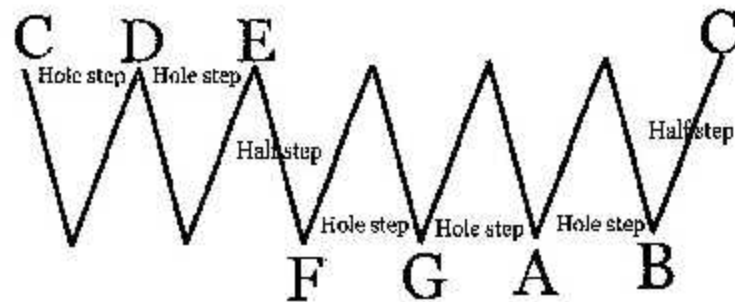
B And E Is half note or whole note

C D E F G A B C
1 2 3 4 5 6 7 8

A to G is the basic note but
You should use C to C to
Learn music

Example for note variation (full note and half note)

1 C 2 D 3 E 4 F 5 G 6 A 7 B 8 C
Hole step Hole step Half step Hole step Hole step Hole step Half step Hole step

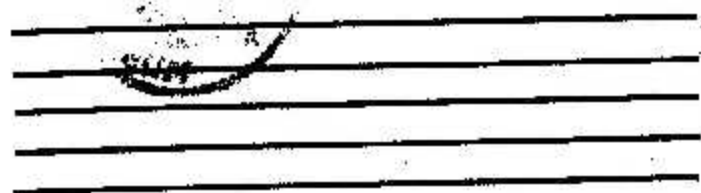


1 2 4 5 6 Full note

3 and 7 Half note

THE STAVE AND PITCH

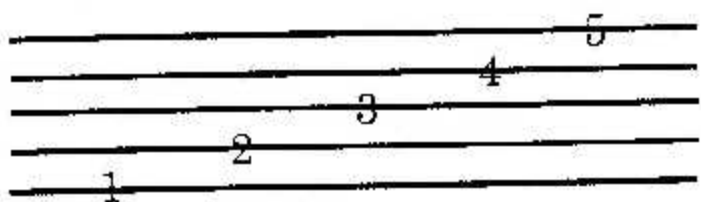
The five line group can call stave or staff



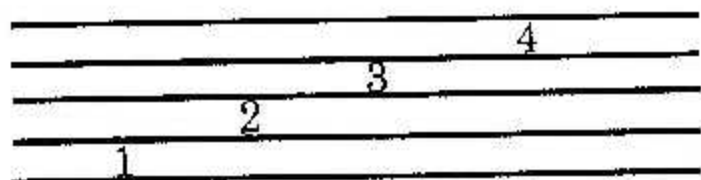
Music is written on a stave of Five lines and four space



Music notes are oval shaped Symbols that are placed on the Lines and in the space



The line of the stave are Numbered from bottom to top



The space between the lines are Also numbered from bottom to top

PITCH

If the note appear higher on the stave, they sound higher in pitch

If the note appear lower on the stave, they sound lower in pitch



Higher Lower Higher

TREBLE CLEF

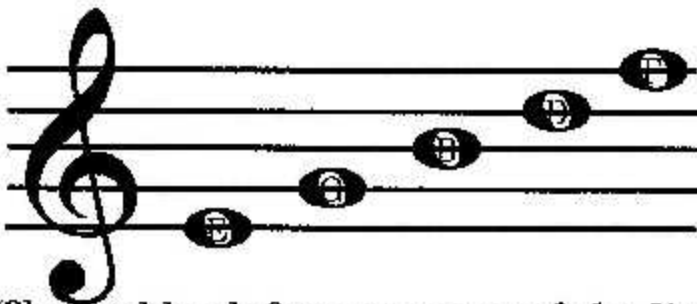


R

The treble clef or G clef is used for note in the higher pitch range

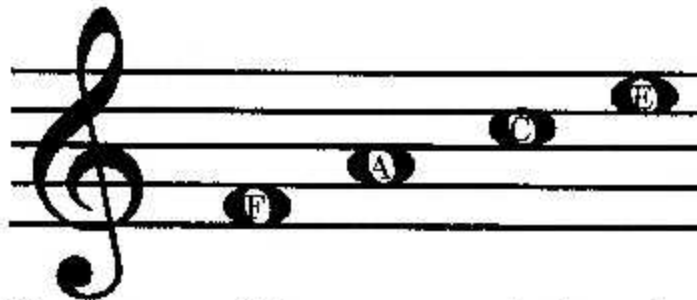


The treble clef placed on the G note this G is above the middle C



E G B D F
Every Good Boy Does Fine

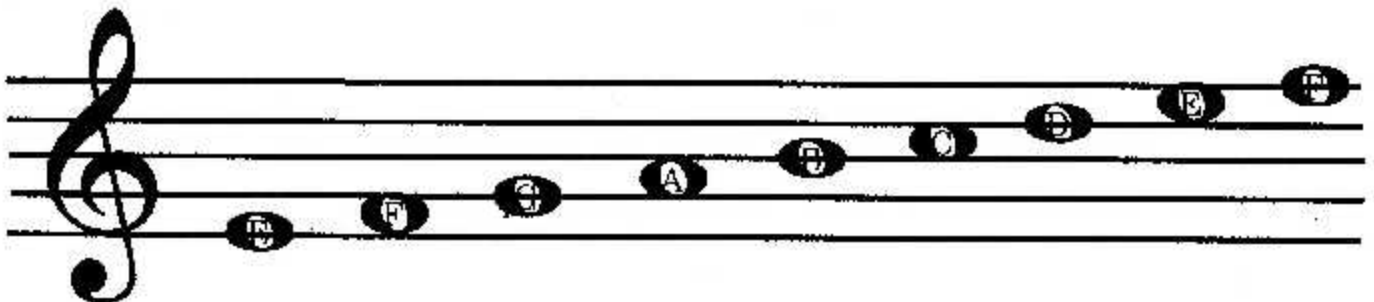
The treble clef stave name of the line note from bottom to top



F A C E

The name of the space note from bottom to top

LINE AND SPACE NOTE OF THE TREBLE CLEF STAVE



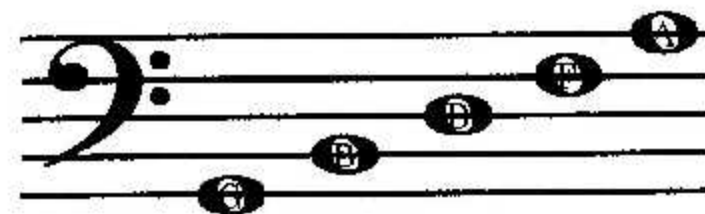
BASS CLEF



The bass clef or F clef is used for note in the lower pitch range

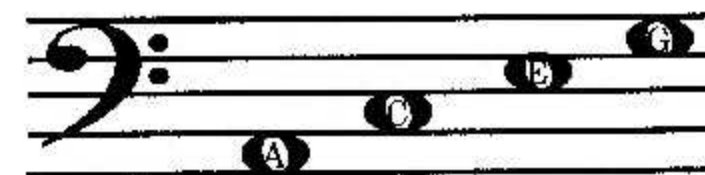


The bass clef placed on the F note this F is below the middle C



G B D F A
Good Boy Does Fine Always

The bass clef staff name of the line note from bottom to top



A C E G
All cow eat grass

The name of the space note from bottom to top

LINE AND SPACE NOTE OF THE BASS CLEF STAVE

